

# ROAD-RAIL LOADER | GF13



## GF13



## FEATURES

- The perfect harmony between size and compactness
- Last generation components
- Warranty of 3 years

## MAIN BENEFITS:

- **Works on rail and road:** the GF13 loader works with the same high performance both on rails and on the road.
- **Light and balanced:** the weight of GF13 allows the machine to work on wet, sandy or muddy soils with better performance than heavier machines.
- **Compact:** the small working dimensions make the machine ideal for working in confined spaces with maximum speed.
- **Rapid:** the 130 bhp engine offers the ideal 14 ton GF13 loader for maximum acceleration and speed.

### ROAD-RAIL LOADER GF13

*Hydrostatic transmission on a closed circuit with DTC: Dynamic Torque Control which guarantees always smooth acceleration.*

*DSC: Dynamic Stability Control prevents tipping and guarantees the stability of the machine.*

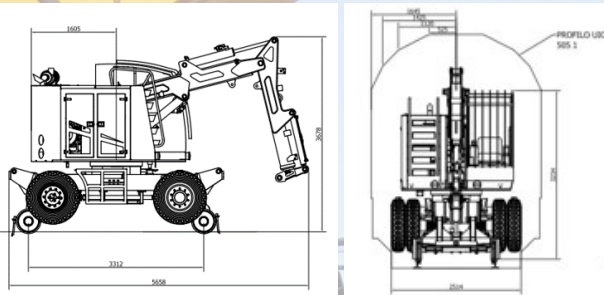


# ROAD-RAIL LOADER | GF13

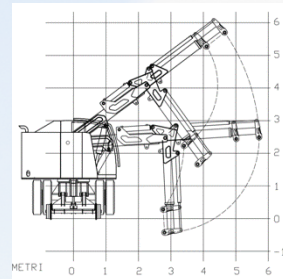
## ADVANTAGES:

- The road-rail loader GF13 is the smallest and most compact of the family.
- It has been designed for civil works and railway maintenance, thanks to its extreme agility and low weight.
- The extreme stability gives it lifting and working capacity in any situation.
- Compliant with UNI EN 15746.

### DIMENSIONS AND RAILWAY SHAPE



### ARM MOVEMENT DIAGRAM



## TECHNICAL DATA:

Main Applications	Hydraulic rotator for equipment, forks of a different kind, clamshell buckets and buckets for stripping between sleepers, stripping equipment, hook for crane
Diesel engine power:	95 KW (130 hp) a 2300 rpm, common rail, intercooler turbo, liquid cooled
Fuel tank capacity	160 l
Weight of the machine	13.680 Kg
Maximum shape	UIC 505/1
Maximum load	Road: 5.100 Kg / Rail: 3.600 Kg
Rotation angle	360 ° continuous rotation angle
Driving cab	Two seats, soundproofed, wide visibility, heatless pans. Equipped with air cooling-heating system
Cab equipment	On-board computer with touch screen
Max. speed (road / rail)	20 Km/h / 20 Km/h
Steering	Hydr. servo, adjustable steering column, automatic locking device when working on the rail
Service brake (road / rail)	road: hydraulic with disc brakes on 8 wheels
Parking brake (road / rail)	road: hydraulic with negative action on 8 wheels / rail: hydraulic with negative action on the 2 rear wheels
Track gauge	standard 1.435 mm, available in all gauges
Road axles	front: steering, oscillating with hydraulic lock; rear: rigid
Rail axles	front: swinging; rear: rigid
Hydraulic oil circuit	Total capacity: 300 l
Maximum arm extension	5700 mm
Loading capacity of the refueling pump	30 l / min



Company quality system certified  
according to UNI EN ISO 9001:2015

