

ROAD-RAIL LOADER | GF22



GF22



FEATURES

- The perfect agility to work in tight spaces
- Last generation components
- Warranty of 3 years

ROAD-RAIL LOADER GF22

Hydrostatic transmission on a closed circuit with DTC: Dynamic Torque Control which guarantees always smooth acceleration.

DSC: Dynamic Stability Control prevents tipping and guarantees the stability of the machine.

PentaHydra: five independent hydraulic circuits maintain maximum power and speed with multiple movements.

Gear change with automatic and robotic double mode.



MAIN BENEFITS:

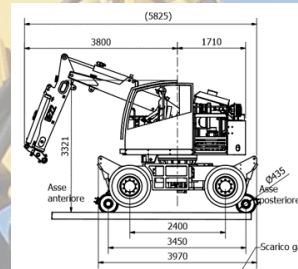
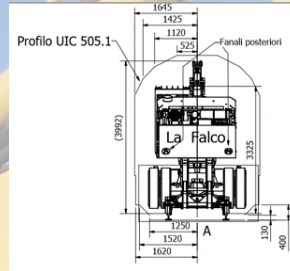
- **Works on rail and road:** the GF22 loader works with the same high performance both on rails and on the road.
- **Light and balanced:** the weight of GF22 allows the machine to work on wet, sandy or muddy soils with better performance than heavier machines.
- **Compact:** the small working dimensions make the machine ideal for working in confined spaces with maximum speed.
- **Rapid:** the 142 bhp engine offers the 16.6 ton GF22 loader the ideal power for maximum acceleration and speed performance. The pulling force is 102KN on the road and 82KN on the rail.



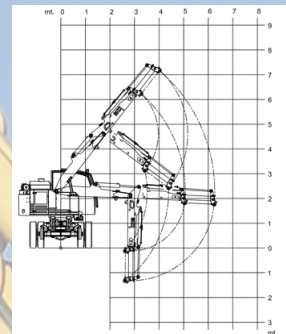
ADVANTAGES:

- The road-rail loader GF22 is the fastest in the family.
- It has been designed to work in confined spaces thanks to its compact dimensions and great agility.
- The extreme stability gives it lifting and working capacity in any situation.
- Born as a railway machine, it is also ideal for use as an excavator.
- Compliant with UNI EN 15746.

DIMENSIONS AND RAILWAY SHAPE



ARM MOVEMENT DIAGRAM



TECHNICAL DATA:

Main Applications	Hydraulic rotator for equipment, forks of a different kind, clamshell buckets and buckets for stripping between sleepers, excavating bucket, ridging pliers with vibrating teeth, miller for brushwood, rocker arm for sleepers, hydraulic vertical drill, stripping equipment, hydraulic hammer, hook for crane.
Diesel engine power:	105 KW (142hp) a 2300 rpm, common rail, intercooler turbo, liquid cooled
Fuel tank capacity	160 l
Weight of the machine	16.600 Kg
Maximum shape	UIC 505/1
Maximum load	Road: 5.600 Kg / Rail: 4.200 Kg
Rotation angle	360 ° continuous rotation angle
Driving cab	Two seats, soundproofed, wide visibility, heatless pans. Equipped with air cooling-heating system
Cab equipment	On-board computer with touch screen
Max. speed (road / rail)	30 Km/h / 30 Km/h
Steering	Hydr. Servo, adjustable steering column, automatic locking device when working on the rail.
Service brake (road / rail)	road: hydraulic with disc brakes on 8 wheels / rail: tri-stop brake on 4 wheels
Parking brake (road / rail)	road: hydraulic with negative action on 8 wheels / rail: pneumatic activated through tri-stop cylinders on 4 wheels
Track gauge	standard 1,435 mm, available in all gauges
Road axles	front: steering, oscillating with hydraulic lock; rear: rigid
Rail axles	front: swinging; rear: rigid
Hydraulic oil circuit	Total capacity: 300 l
Maximum arm extension	6200 mm
Loading capacity of the refueling pump	30 l / min



Company quality system certified
according to UNI EN ISO 9001:2015

