

# ROAD-RAIL LOADER | ENZO



ENZO



## FEATURES

- An unrivaled explosion of power and control
- Last generation components
- Warranty of 3 years

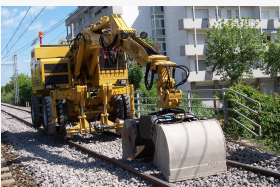
### ROAD-RAIL LOADER ENZO

*Hydrostatic transmission on a closed circuit with DTC: Dynamic Torque Control which guarantees always smooth acceleration.*

*DSC: Dynamic Stability Control prevents tipping and guarantees the stability of the machine.*

*PentaHydra: five independent hydraulic circuits maintain maximum power and speed with multiple movements.*

*Gear change with automatic and robotic double mode.*



## MAIN BENEFITS:

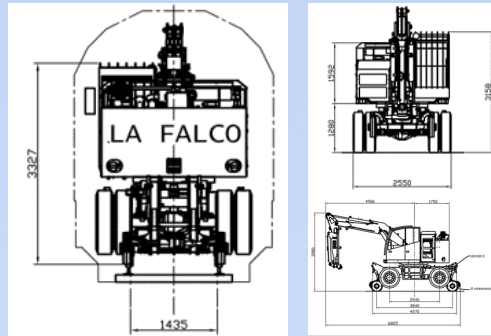
- **Works on rail and road:** the Enzo loader works with the same high performance both on rails and on the road.
- **Wide range of tools available suitable for different work needs:** it mounts multipurpose forks of various types. Different buckets: buckets for loading of crushed stone, buckets for stripping between sleepers and multi-purpose buckets. Rocker arm for sleepers. Excavating buckets of different sizes. Ridging pliers with vibrating. Miller for brushwood. Hydraulic hammer for demolitions. Magnetic plate. Hydraulic vertical drill. Hook for the crane. Magnet, etc.
- **High lifting capacity:** Enzo is equipped with powerful arms that have a maximum lifting capacity of 10 tons.
- **High traction power:** the weight of the machine, the accurate design, and a 217 HP engine, give to Enzo rail road loader a high traction capacity of up to 160 kN on the road and 140 kN on the rails.



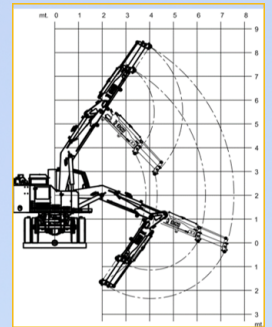
## ADVANTAGES:

- The Enzo road-rail loader is the most powerful of the family.
- It has been designed and built to deal with extremely heavy workloads.
- It has great lifting and traction capacity, as well as a low and centered center of gravity which gives it great stability in all conditions.
- Compliant with UNI EN 15746.

### DIMENSIONS AND RAILWAY SHAPE



### ARM MOVEMENT DIAGRAM



## TECHNICAL DATA:

<b>Main Applications</b>	Hydraulic rotator for equipment, forks of a different kind, clamshell buckets and buckets for stripping between sleepers, excavating bucket, ridging pliers with vibrating teeth, miller for brushwood, rocker arm for sleepers, hydraulic vertical drill, stripping equipment, hydraulic hammer, hook for crane, magnet
<b>Diesel engine power:</b>	160 KW (217 hp) a 2300 rpm, common rail, intercooler turbo, liquid cooled
<b>Fuel tank capacity</b>	200 l
<b>Weight of the machine</b>	29.300 Kg
<b>Maximum shape</b>	UIC 505/1
<b>Maximum load</b>	Road: 10.000 Kg / Rail: 8.300 Kg
<b>Rotation angle</b>	360 ° continuous rotation angle
<b>Driving cab</b>	Two seats, soundproofed, wide visibility, heatless pans. Equipped with air cooling-heating system
<b>Cab equipment</b>	On-board computer with touch screen
<b>Max. speed (road / rail)</b>	30 Km/h / 30 Km/h
<b>Steering</b>	Hydr. servo, adjustable steering column, automatic locking device when working on the rail
<b>Service brake (road / rail)</b>	road: hydraulic with disc brakes on 8 wheels / rail: tri-stop brake on 4 wheels
<b>Parking brake (road / rail)</b>	road: hydraulic with negative action on 8 wheels / rail: pneumatic activated through tri-stop cylinders on 4 wheels
<b>Track gauge</b>	standard 1.435 mm, available in all gauges
<b>Road axles</b>	front: steering, oscillating with hydraulic lock; rear: rigid
<b>Rail axles</b>	front: swinging, with hydraulic lock; rear: rigid
<b>Hydraulic oil circuit</b>	Total capacity: 400 l
<b>Maximum arm extension</b>	7500 mm
<b>Loading capacity of the refueling pump</b>	30 l / min



Company quality system certified according to UNI EN ISO 9001:2015